

# E915



可升级



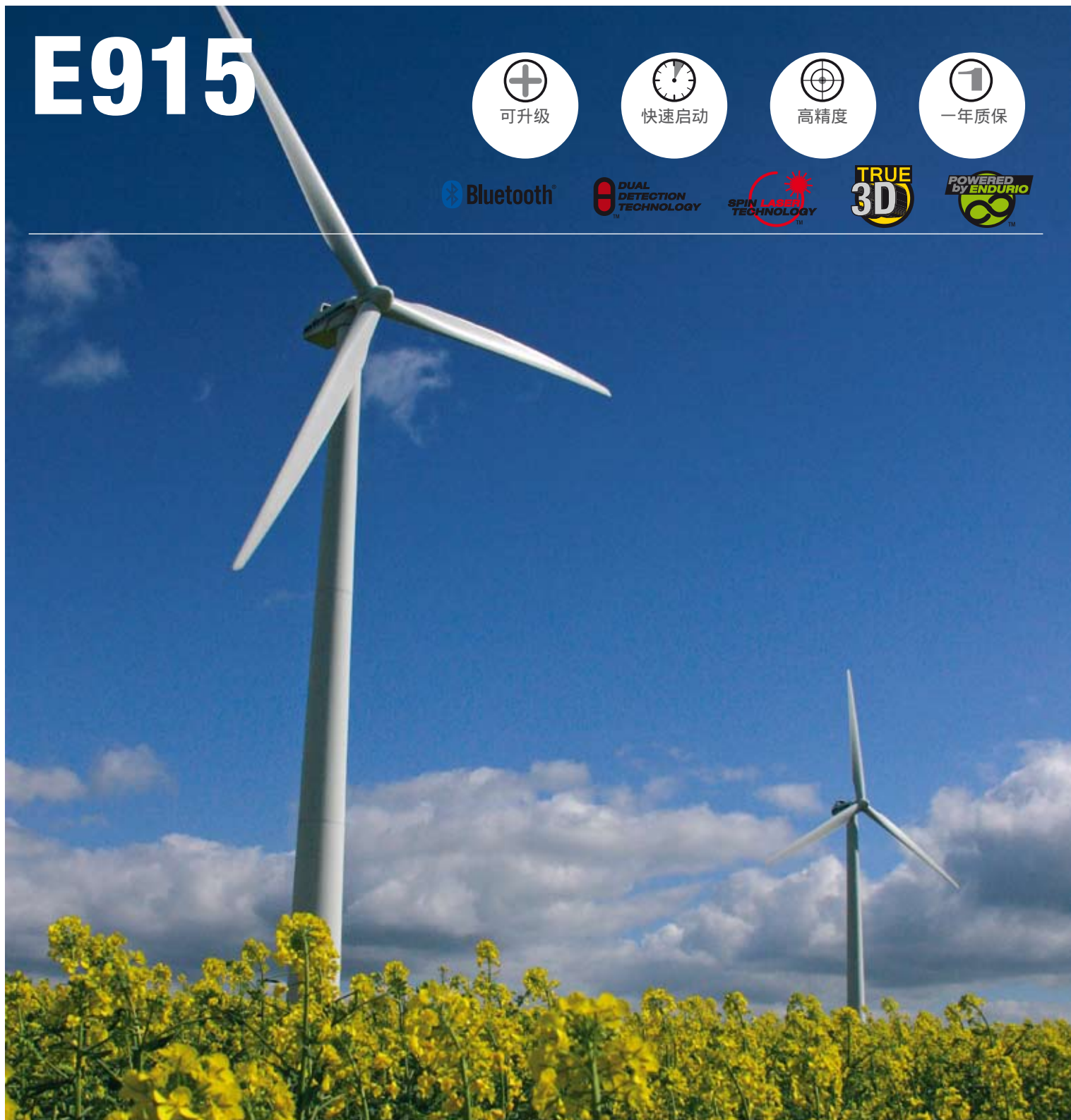
快速启动



高精度



一年质保



easyLaser E915激光对中仪

**EASY-LASER**<sup>®</sup>



# A CHOICE WITH PRECISION

*is also the Easy choice!*

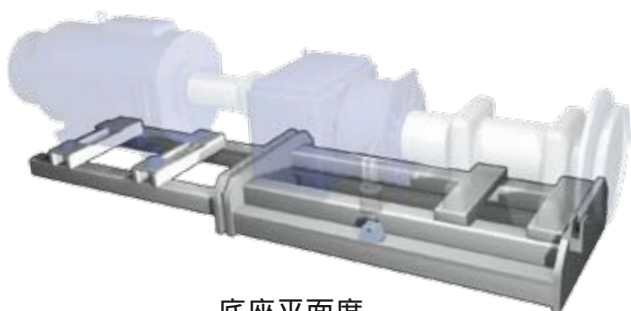
## 用户遍布全球

Easy-Laser®测量系统通过全球70多个国家的代理商销售。北京泛泰克斯仪器有限公司是Easy-Laser®测量系统在中国的总代理，公司总部位于北京，在南京、广州和成都设有办事处，能为全国的用户提供优质、

## 适用于各种平面度测量

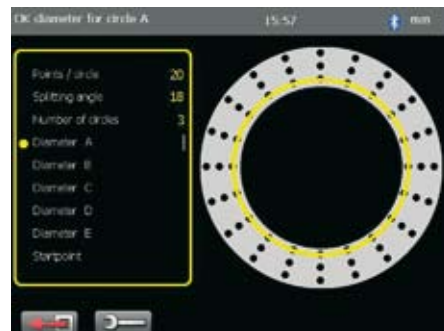


法兰平面度和内倾度

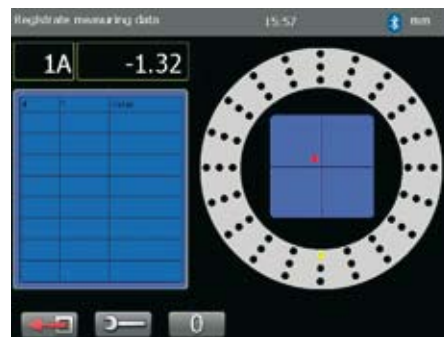


底座平面度

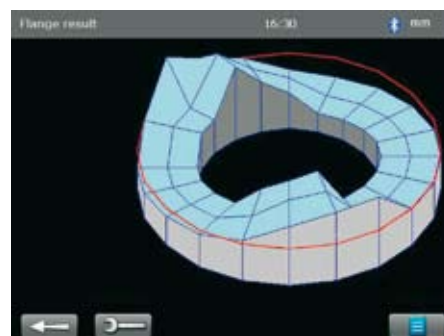
## 法兰平面度测量程序



显示测量点数和法兰直径，可以同时测量1到5圈。



在图形上显示将要测量的点，在主机上能显示激光是否打在接收器上。



测量结果显示



# SIMPLE AND EFFECTIVE



## 简单易用=快速简便

方便的安装和便捷的放到测量面上  
简单的操作过程和明了的测量结果  
现场数据处理，直接出结果，无需通过电脑，提高工作效率  
无线蓝牙技术（可选）采用  
采用自动旋转激光技术，大大减少测量时间（E915）  
彩色显示屏显示，结果清晰明了



Easy-Laser® D23激光发射器直接吸附在法兰面上，它有一个自动旋转的激光发射头，这样就能产生连续的激光面。



Easy-Laser® E5激光接收器放置在测量点上，由于激光发射器的持续旋转，你只需移动激光接收器和记录数据，节省找激光的时间，大大提高测量效率。并且采用无线蓝牙技术，确保数据的可靠传输。



当所有数据测完后，结果直接在显示单元上显示处理，不用传到电脑处理。这样大大提高工作效率。

# TECHNICAL DATA

System	
Relative humidity	10–95%
Weight (complete system)	12.1 kg [26.7 lbs]
Carrying case	WxHxD: 550x450x210 mm [21.6x17.7x8.3"] Drop tested. Water and dust tight.

Laser transmitter D23 (system E915)	
Type of laser	Diode laser
Laser wavelength	635–670 nm, visible red light
Laser Safety Class	Class 2
Output	< 1 mW
Beam diameter	6 mm [1/4"] at aperture
Working area, range	20-metre radius [65']
Type of battery	2 x R14 (C)
Operating time/battery	approx. 15 hours
Operating temperature	0–50 °C
Levelling range	± 30 mm/m [± 1.7"]
3 x spirit vials' scaling	0.02 mm/m
Flatness of sweep	0.02 mm
Housing material	Aluminium
Dimensions	WxHxD: 139x169x139 mm [5.47x6.64x5.47"]
Weight	2650 g [5.8 lbs]

E5 (system E915)	
Type of detector	2 axis PSD 20x20 mm [0.78" sq]
*Dual Detection Technology™	Can detect both spinning and stationary laser beam
Resolution	0.001 mm [0.05 mils]
Measurement error	± 1% +1 digit
Inclinometers	0.1° resolution
Thermal sensors	± 1° C accuracy
Environmental protection	IP Class 66 and 67
Operating temperature	-10–50 °C
Internal battery	Li Po
Housing material	Anodized aluminium
Dimensions	WxHxD: 60x60x42 mm [2.36x2.36x1.65"]
Weight	186 g [6.6 oz]

Display unit	
Measuring programs	flatness
Type of display/size	VGA 5.7" colour
Displayed resolution	0.001 mm / 0.05 thou
Power management	Endurio™ system for unbroken power supply
Internal battery (stationary)	Li Ion
Operating time	Appr. 30 hours (Normal operating cycle)
Operating temperature	-10–50 °C
Connections	USB A, USB B, External, Easy-Laser® units, Network
Wireless communication	Class I Bluetooth® Wireless Technology
Storage memory	>100,000 measurements
Help functions	Calculator, Unit converter, Instruction films
Environmental protection	IP Class 65
Housing material	PC/ABS + TPE
Dimensions	WxHxD: 250x175x63 [9.8x6.9x2.5"]
Weight (without batteries)	1030 g [2.3 lbs]

Wireless connection unit	
Wireless communication	Class I Bluetooth® Wireless Technology
Operating temperature	-10–50 °C
Environmental protection	IP Class 66 and 67
Housing material	ABS
Dimensions	53x32x24 mm [2.1x1.2x0.9"]
Weight	25 g [0.9 oz]

Cables	
Type	With Push/Pull connectors
System cable	Length 2 m [78.7"]
Extension system cable	Length 5 m [196.8"]
USB cable	Length 1.8 m [70.8"]

Magnet base with turnable head (for detector)	
Holding power	800 N

Rods for detector	
Length	60 mm / 120 mm (extendable) [2.36"/4.72"]

EasyLink™ data base software for PC	
System requirements	Windows® XP, Vista, 7. For the export functions, Excel 2003 or newer must be installed on the PC.

System Easy-Laser® E915	
1	Laser transmitter D23
1	Detector E5
1	Display unit
1	Bluetooth unit
1	Cable 2 m
1	Cable 5 m (extension)
1	Cable support
1	Safety strap for laser transmitter
2	Targets for rough alignment
1	Magnet base with turnable head
1	Set of rods (6x60 mm, 6x120 mm)
1	Manual
1	Quick manual
1	Measuring tape 5 m
1	USB memory stick (with EasyLink™ program)
1	USB cable
1	Battery charger (100–240 V AC)
2	Batteries Alkaline R14
1	Toolbox
1	Cleaning cloth for optics
1	CD with documentation
1	Carrying case



# THE PARTS OF THE SYSTEM



- A. 为惯用左手或右手的人设计的双确认键
- B. 方便读数的大屏幕显示屏
- C. 按键

## 显示单元

通过一些创新设计，用于E系列的新显示单元能提高测量效率和延长使用时间。并且所采用的防滑橡胶外壳和坚实的结构设计符合人体工程学。



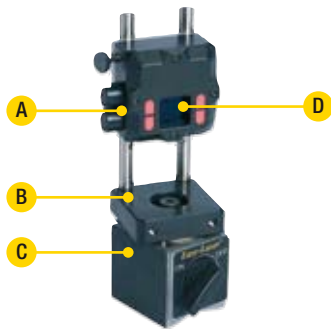
- D. 薄边框方便手拿
- E. 集成的电池仓设计，使得显示屏有合适的角度方便读数
- F. 电池仓
- G. 挂带扣环

## 个人设置

你可以创建一个用户配置文件来保存个人设置，你也可以为不同类型的测量进行不同的设置，这使得测量更加快速。

## 数值程序

所有测量系统带有数值程序，有这个程序就可以测量任何的几何量，如直线度和垂直度。



- A. 数据接头
- B. 旋转头
- C. 磁吸座
- D. PSD (2 axis)

## 激光接收器

由于采用双重探测了技术，E5激光接收器能探测到稳定的旋转激光。E5激光接收器通过电缆或无线传输单元跟显示单元连在一起。通过转动磁吸座的旋转头使得激光接收器正对激光发射器。E5激光接收器是E915的标准配件。



- A. 自动旋转头
- B. 调整底盘

## D23自动旋转激光发射器

D23激光发射器有个小电动机，自动旋转头提供一个360°的激光面。测量距离长达20米。

D23激光发射器配置在E915系统。



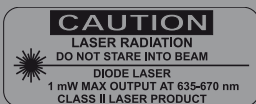
## 无线传输

无线传输单元通过接口分别连接在激光接收器上，这样测量就更加方便了。

(可选)



Easy-Laser® is manufactured by Damalini AB, Åbäcksgatan 6B, 431 67 Mölndal, Sweden, Phone +46 31 708 63 00, Fax +46 31 708 63 50, email: info@damalini.se, www.damalini.com © 2009 Damalini AB. We reserve the right to make modifications without prior notification. Easy-Laser® is a registered trademark of Damalini AB. Windows® and Excel® are registered trademarks of the Microsoft Corporation. This product complies with: SS-EN60825-1-1994, 21 CFR 1040.10 and 1040.11



北京泛泰克斯仪器有限公司

电话;010 - 6409 6065/66/67/68  
传真;010 - 6409 6069